

Directions

Diagnostic and Therapeutic Heart Center AG Kappelstrasse 35 in 8002 Zurich

Our new practice is located in the Villa Hofmann directly adjacent to the Klinik im Park Hirslanden. There are a few parking spaces available in front of the Heart Centre or in the underground car park of the Klinik im Park.

Our practice is located on the 1st floor. You can reach us through the main entrance on the ground floor.

Arrival by Public Transport

By Train

To Zurich main station, Zurich-Enge or Wollishofen station, then take tram number 7.

By Tram

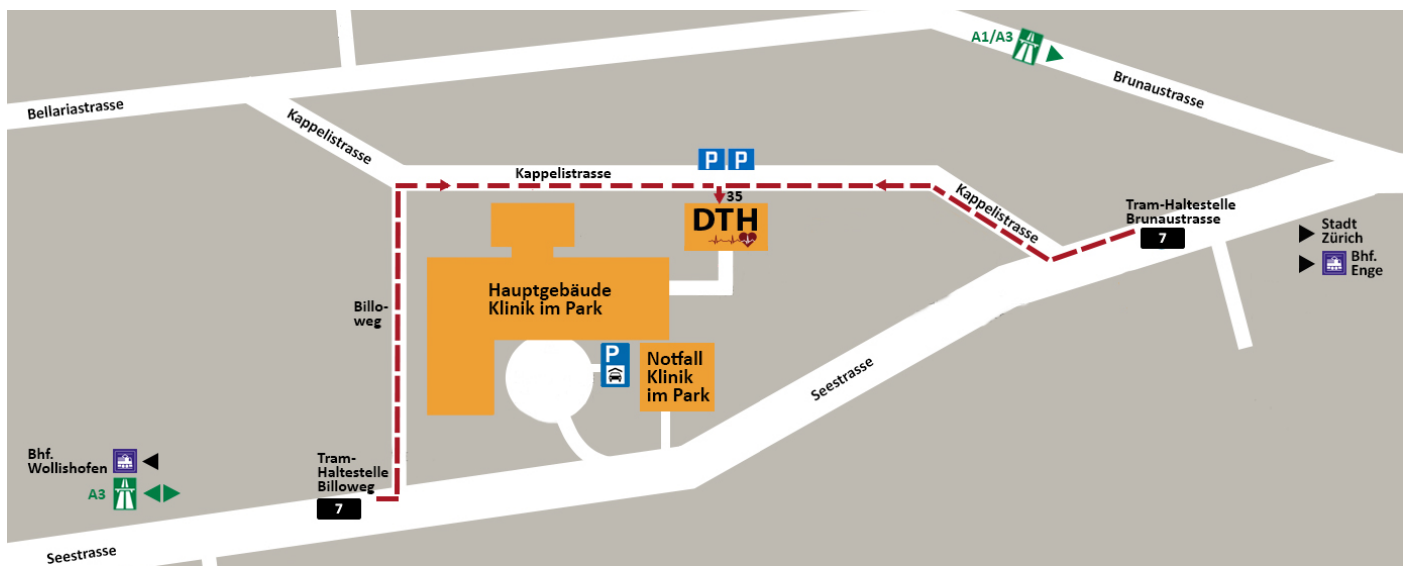
Tram number 7 from "Bahnhofstrasse" (Zurich main station), "Zürich-Enge, Bahnhof" or "Wollishofen (Bhf. Wollishofen) to Brunaustrasse (recommended) or Billoweg (steep). If you choose Brunaustrasse, walk along Kappelstrasse until you reach number 35.

For timetable information, please see our website www.dth-herzzentrum.ch or www.sbb.ch.

Kappelstrasse 35
8002 Zurich
+41 44 461 00 67
dth-admin@hin.ch

DR. MED. OLAF FRANZEN
Specialist in cardiology
and general internal medicine
Interventional cardiologist
Att. physician Klinik im Park
olaf.franzen@hin.ch

**PROF. DR. MED.
JOHANNES WALTENBERGER**
Specialist in cardiology
and general internal medicine
Interventional cardiologist
Att. physician Klinik im Park
waltenberger@hin.ch



Arrival by Car

From Chur

Follow the A13/A3 motorway in the direction of Zurich and leave at the Wollishofen exit. Follow Albisstrasse to Seestrasse, then follow Seestrasse, turn left into Kappelistrasse and follow to No. 35.

From Winterthur

Follow the A1 motorway in the direction of Zurich until the Zurich-City exit. There are various routes through the city of Zurich to choose from. Please consult your route planner.

From Dietikon

Follow the A1 motorway via Zurich-West in the direction of Zurich, then Westring/Chur. At Zürich-City, follow the signs to Zürich-Brunau on the left and take the exit. After a short stretch on Allmendstrasse, turn right into Brunaustrasse (railway crossing) and follow over the hill to Seestrasse. Turn right there and immediately right again into Kappelistrasse. Follow the road until you reach No. 35.

Parking Spaces

We only have a few private parking spaces in front of the building at Kappelistrasse 35. These are supplemented by further public parking spaces (Blue Zone, max. parking time with disc: 1 hour). Alternatively, there is also the possibility to park in the parking lot of the Klinik im Park (at Seestrasse 220) (subject to a fee).

Information for People with Walking Difficulties

Please call us before your visit.

We look forward to your visit!

Your practice team
Diagnostic and Therapeutic Heart Centre AG

